



CONVERGE MINES



CONVERGE MINES

FORMERLY “ORIENTAL”

Leading the Industry in High-Quality Stone Aggregates
and Manufactured Sand.

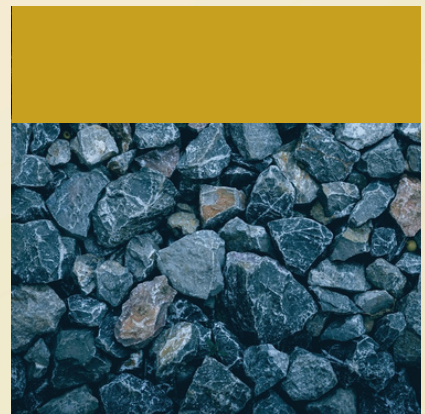


COMPANY OVERVIEW

Converge Mines is a Leader in the Production of High Quality Stone Aggregates.

Converge Mines: Your Integrated Partner for High-Quality Construction Materials.

Converge Mines, formerly Oriental founded in 2012, offers a comprehensive solution for your aggregate needs. As a vertically integrated service provider, we specialize in the production of superior M-sand and Aggregates for the rapidly expanding construction sector in Bangalore and surrounding areas. Our state-of-the-art 5-acre facility and high-performance Metso make machinery guarantee products that meet the highest quality standards.





Experience the Converge Mines M-Sand Advantage:

✓ Uncompromising Durability

Engineered to resist harsh environmental and climatic conditions, ensuring long-lasting structural integrity

✓ Superior Strength Performance:

Custom-designed with optimal shape, gradation, and surface texture, exceeding river sand in compressive and flexural bond strength, and water retentivity.

✓ Enhanced Workability:

Cubical shape and precise gradation provide excellent plasticity to mortar, improving ease of application for masonry work

✓ Minimized Construction Flaws:

Controlled fineness ensures optimal setting times, effectively reducing segregation, bleeding, honeycombing, voids, and capillary action in concrete.

✓ Significant Cost Reduction:

Guaranteed zero wastage and absence of impurities, coupled with the potential for reduced cement usage due to superior strength and shape.

✓ Environmentally Responsible Choice:

Actively contributes to the conservation of vital river ecosystems by offering a sustainable alternative to traditional river sand mining.





The New Standard in Aggregates

Engineered for strength and sustainability, modern aggregates are setting a new benchmark in construction. With superior durability, consistent quality, and optimized gradation, they enhance the performance of concrete, roadwork, and infrastructure projects, while supporting eco-friendly building practices.





OUR PLANT

Metso 250 TPH (Tonnes per Hour) three stage crusher plant, which includes



A Jaw crusher Cone crusher Vertical shaft impactor (VSI) A 100 TPH Flip Flow Screen that washes dry sand from the tertiary crusher (the VSI) to produce M-sand of the highest quality. New front loader from JCB with a bucket capacity of 4 tonnes. New 80 tonnes weigh bridge.

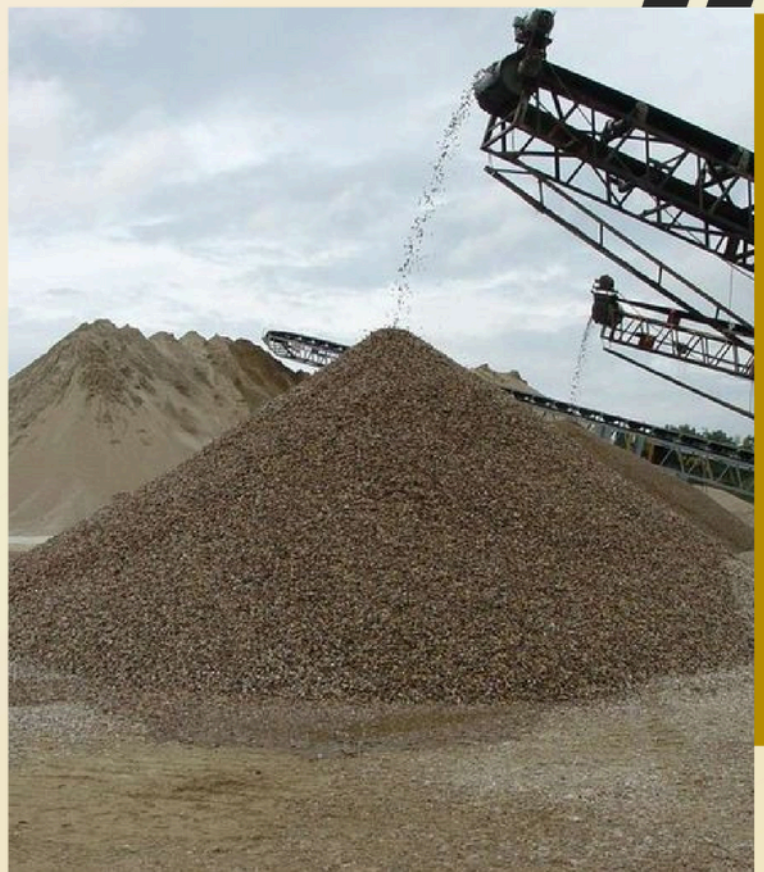
OUR PRODUCTS

AGGREGATES

- 06 mm
- 12 mm
- 20 mm
- 40 mm
- 50-60 mm(Against Order Only)
- Granular Sub Base (GSB/ Wet Mix)

SAND

- Crushed Rock Fines (CRF)
- Dry Sand
- M Sand





ENGINEERED FOR SUPERIOR PERFORMANCE

The Science Behind Our Sand.

Converge Mines delivers sand that redefines quality and reliability, earning the confidence of numerous satisfied customers. Our superior product is the result of a sophisticated approach:



Setting New Benchmarks:

Our M-sand for concrete adheres to IS 383 standards, while our P-sand for plaster applications exceeds these requirements, ensuring optimal performance and durability in every project.



Advanced Purification:

Our state-of-the-art 5-stage process meticulously removes all impurities – clay, silt, and inorganic matter – unlike conventional river sand. This precise engineering at the particle level yields uniform gradation and distribution, leading to significantly improved concrete strength and handling.



Quality Through Innovation:

We leverage cutting-edge Metso 5-Stage Machinery to process carefully chosen Charnockite/Granite rocks, guaranteeing a consistently high-quality product batch after batch.



Optimized Concrete Mixes:

The inherent strength and consistent quality of Converge Mines sand empower our customers to achieve their design specifications with potentially reduced cement usage. This eliminates the prevalence of honeycombing, a common defect associated with inconsistently shaped aggregates.





The Converge Mines Advantage: Expertise You Can Rely On.

At Converge Mines, our success is underpinned by the strength and expertise of our team. Comprised of highly qualified technicians and seasoned marketing professionals with extensive industry backgrounds, they are united by a shared commitment to providing the highest quality products and unparalleled service.





CONVERGE MINES

● Aggregates

● M-sand

Plant Address:

6/2, M.G. Palya, Kailancha Hobli, Bidadi, Ramanagara Dist.
E-mail: info@convergemines.com

Contact Person:

Vyshak R J
Director
Mob: +91 9844233244